



a part of Edukos Trust

[www.dunswellacademy.co.uk](http://www.dunswellacademy.co.uk)

### Friday 6th September

Welcome back to all our families and a very special welcome to our new families who have joined Dunswell this year. We have had a wonderful first week back in school and all children have settled into their new classes really well.

### Playground

Please be reminded that after school the playground equipment must not be used by any children. We have set rules in school for which children can use this equipment and when. This evening, Reception aged children were seen on the red climbing frame which we only allow our Year 5 and 6 children on. The gate will be closed at 3.35pm prompt so please leave the playground as soon as you have collected your child.

### Reading Skills Books

Only a small number of children have returned to school with a reading skills book. Class 3 and 4 have found it very beneficial for children to have their own copy of their reading skills book. We highly recommend World of Books for good quality used books at a reasonable price. Next term the following books will be studied:

Class 3 – This Morning I Met a Whale by Michael Morpurgo

Class 4 – Kensuke's Kingdom by Michael Morpurgo

### School Lottery

The school lottery continues! So far, just 9 parents have joined but in just a few months has raised the school over £40. The lottery allows parents and carers the opportunity to support school at the same time as having the opportunity to win a prize. Please click here [Dunswell Academy Lottery](#) to buy your tickets. You can choose to play as a one-off or pay monthly to be in each weekly draw. Thank you for your support!



### School Meals

All children in Key Stage Two (Years 3–6) will have their school meal charges added to their Parent Pay account. The cost of a school meal is £2.70.

If you think you may be eligible for Free School Meals (FSM) please look at the following website for more details please click [here](#).

We also strongly encourage parents of children in Key Stage One (Reception– Year 2) to also apply because even though your child is entitled to Universal Free School Meals, applying means that school will receive funding which will support your child.

## Asda Rewards

Many of you may have already heard about the Asda Rewards who will be making donations on people's shopping to their chosen school. There is more information below:

Asda has today announced that it is making millions of pounds available to UK primary schools by encouraging families to use its loyalty programme – Asda Rewards.

In a game changing new campaign, fronted by Joe Wicks, the supermarket is offering to donate 0.5% of the value of any shop done at Asda until 30th November 2024 to customers' primary school of choice – when they shop using Asda Rewards.

The supermarket is kicking off each school fund with £50 and offering to top up with an extra £1 for every customer that selects their school. The retailer is projecting to donate around £7.5m through the campaign.

The new initiative is a first for the loyalty market – allowing users to select their own benefactor and raise unlimited funds, simply by using their loyalty app – and with no impact on their own Cashpot earnings.

Dunswell Academy has signed up and it would be a great way to raise funds for school. Thank you to those who have already signed up!

## Support

Please find below links to support groups:

Early Help support: [East Riding Early Help](#)

The teams offer a range of activities and services for children, young people and their families offering the right help at the right time so that families are resilient, feel confident, safe, healthy and happy. Our services include the following:

- Information and advice
- Additional family support and services and activity sessions that are free and for all children and families
- Intensive family support for families who may need additional support to get through a difficult time.

Domestic Violence: [East Riding Domestic Violence Support](#)

Mental Health and Wellbeing: [East Riding Support](#)

## Wrap Around Care

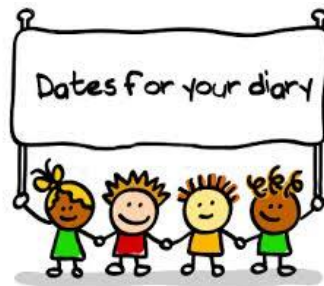
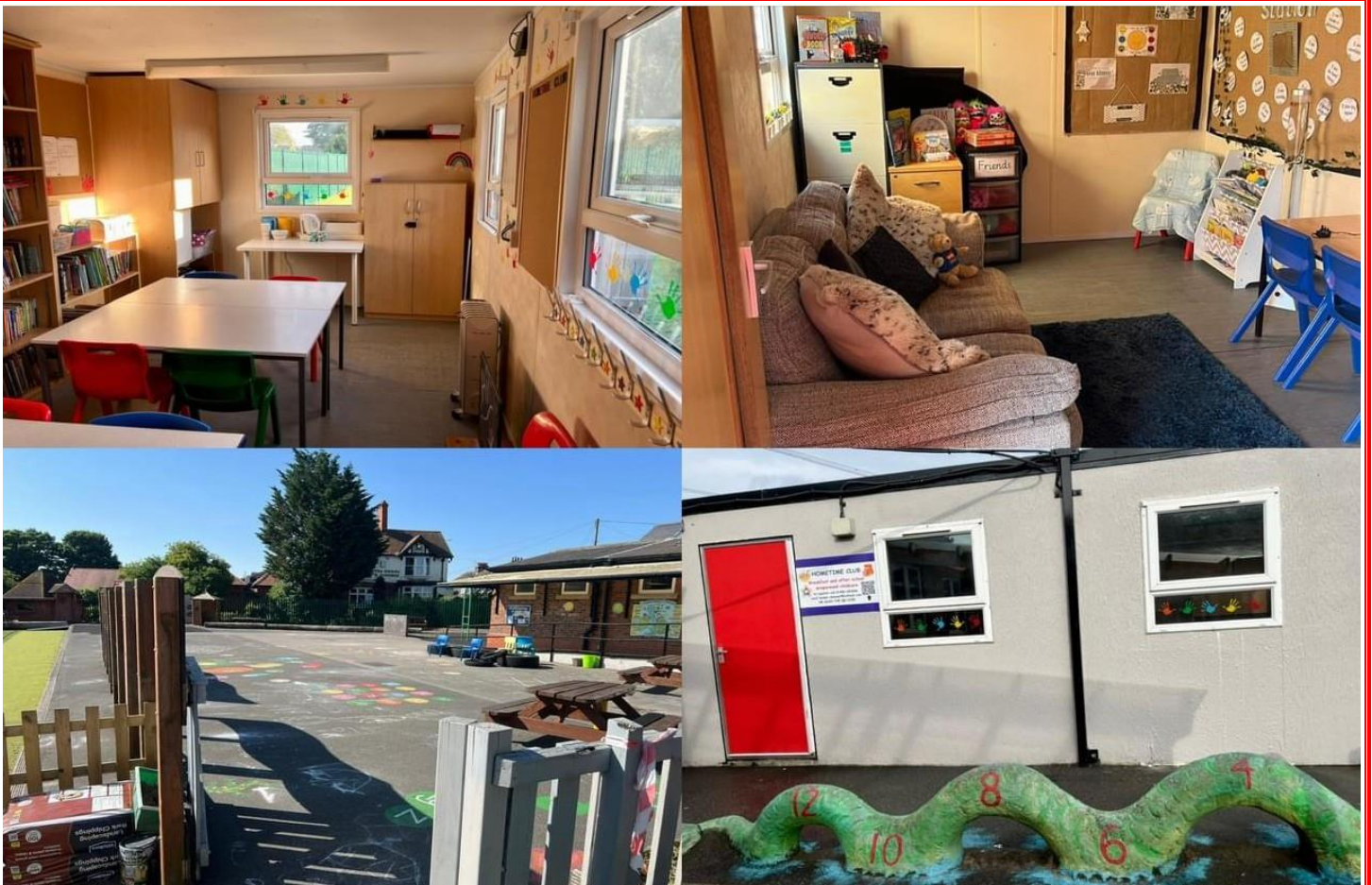


### Update from Christine at Hometime:

“I'm sorry to sound a bit like a stuck record now but we are still awaiting the OFSTED registration to complete. We are at the final step so it really cannot be much longer. Meanwhile, we have moved into School now and we are ready to open just as soon as we get the green light. I have been posting on our Facebook and Insta pages but for those of you who aren't users, I've attached a few photos for you. We still have a few final touches to add but we are really pleased with the cabin, and it already

feels like home!

School have a meet and greet week the week after next so in the unlikely event that we are still not open by that point, we will be open for you to come and have a look around and a chat after you have been to the meet and greet with School. In the meantime, if you have any questions please reach out.



#### AUTUMN TERM 2024

**Monday 16th September** – Class 1 Meet and Greet 3.40pm

**Tuesday 17th September** – Class 2 Meet and Greet 3.40pm

**Thursday 19th September** – Class 4 Meet and Greet 3.40pm

**Class 3 Meet and Greet 4.00pm**

**Thursday 24th October** – School closes for Half term

**Monday 4th November** – School opens for Autumn Term Two

We strongly recognise the part which parents play in their child's education. We can work together as a partnership to ensure that we all promote high standards of learning, behaviour and attitudes towards school so that all children can be the very best.

Yours sincerely

Catherine Burrell  
Head of School

Alison Oxtoby  
Executive Head Teacher